



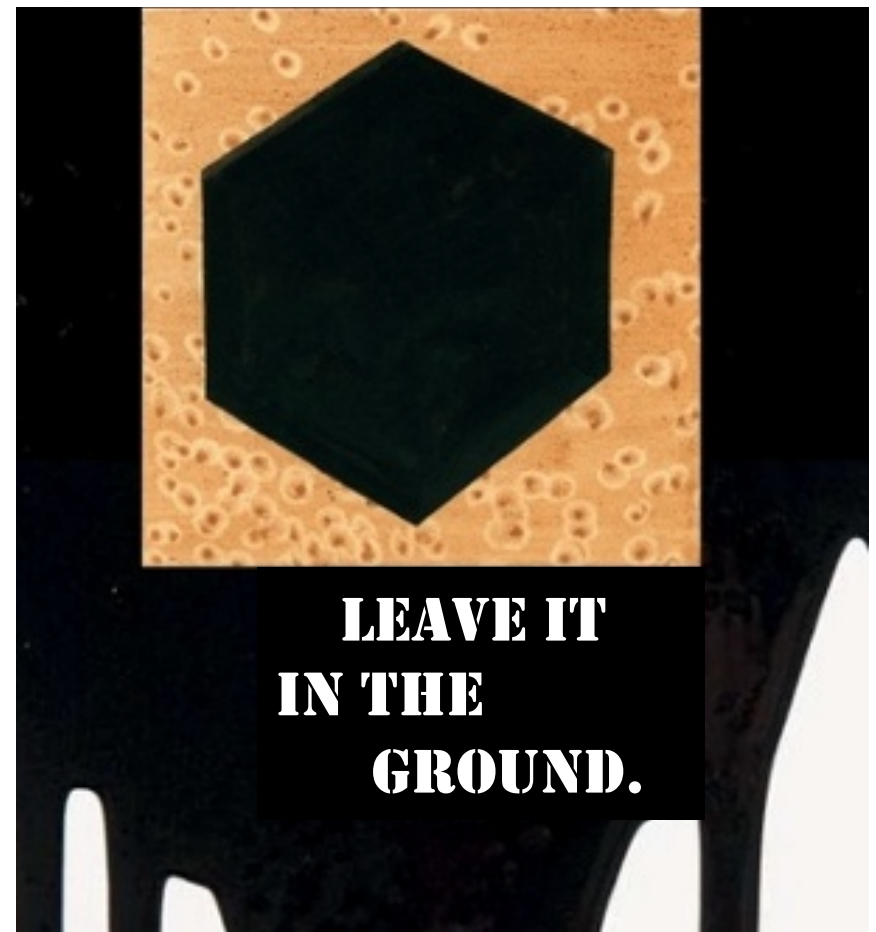
***Introduction to Panel I:
Fossil Fuels - What are they worth
to the economy?***

**Benjamin Schlesinger and Associates, LLC (“BSA”)
3 Bethesda Metro Center, Suite 700
Bethesda, Maryland 20814, USA**

**SAIS/NCAC 19th Annual Washington Energy Policy Conference
Fossil Fuel Reserves: Will We Leave Them In The Ground? Can We Afford Not To?
Washington, DC – April 29, 2015**

The Inspiration:

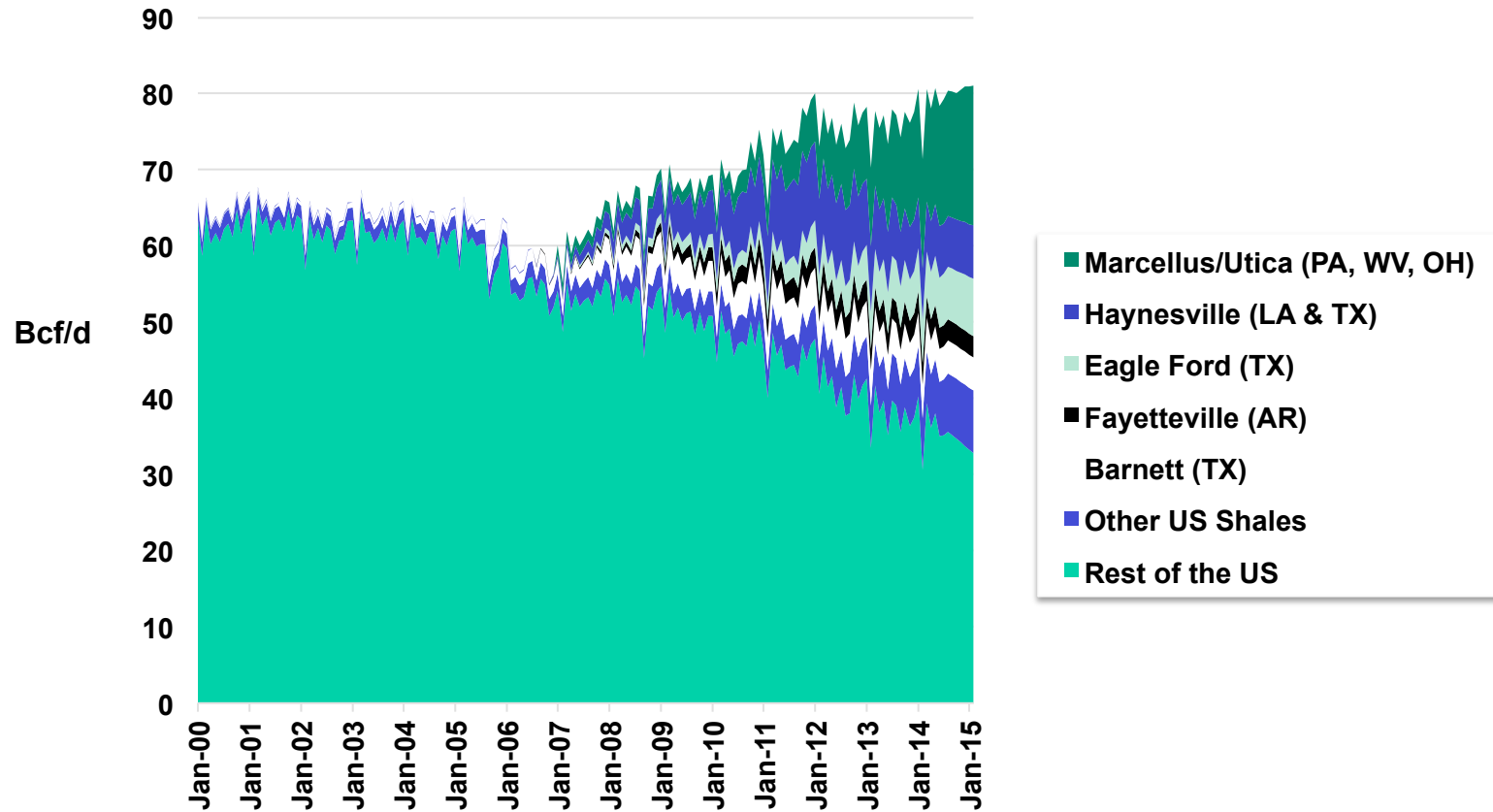
- ◆ Sign seen at an anti-Keystone rally:



Leave it in the Ground?

- ◆ Leave it in the garage.
- ◆ Leave it at the fire station.
- ◆ Leave it in the school bus depot.
- ◆ Leave it at the train station.
- ◆ Leave it on the tarmac.
- ◆ Leave it in port.

*Half US gas supplies are from shale.
What happens to our economy if we leave
it in the ground?*



Source: EIA, BSA; state abbreviations indicate primary state(s).



Benjamin Schlesinger and Associates, LLC

The Bethesda Gateway

3 Bethesda Metro Center, Suite 700

Bethesda, MD 20814

Phone: (301) 951-7266 Fax: (301) 951-3381

Visit us at www.BSAenergy.com